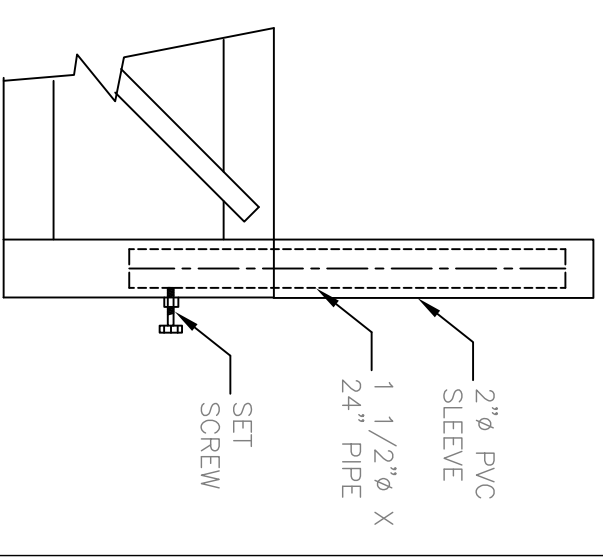


NB: IT IS A GOOD PRACTICE TO USE POLYPROPYLENE ROPE AS PART OF THE ANCHOR LINE TO PROVIDE SOME GIVE/STRETCH TO ABSORB JUMP MOTION. AN ALTERNATIVE IS THE USE OF A TIRE CASING IN EACH ANCHOR LINE. (SHOWN)

PLACE A MARKER BUOY AT FRONT CENTRE TO SIMPLIFY CORRECT PLACEMENT OF JUMP EACH SPRING. A SMALL WEIGHT SUBMERGES IT OVER WINTER TO ENSURE IT DOES NOT MOVE DURING SPRING ICE BREAK UP. (ASSUMING YOU HAVE ICE PROBLEMS!)



BOAT BUMPERS 3 REQ'D

- 1 1/2" ϕ PIPE x 24"
- INSERT INTO THE THREE (3) SLEEVES - "B" WELDED TO THE FRONT TRAILER TRUSS.
- THEY SHOULD BE HIGH ENOUGH FOR THE RUB RAIL ON YOUR BOAT TO STOP THE HULL FROM HITTING YOUR JUMP.
- COVER THESE WITH 2" ϕ PLASTIC PIPE 2 ft. LONG



Designed By:

MATRIX
Marine Equipment Ltd.
Ken and Karen Nelson
Site 2, Box 9, R.R. 1
Leduc, Alberta, Canada, T9E 2X1
Phone: (403) 553-9428

Drawing Title:
**IWSF WATER SKI JUMP
MOORING LAYOUT/DETAILS**

Drawn By: HUKALO OBERG ENGINEERING LTD.

Date: FEB 1995

File Name: IWSFU_R3.DWG

CABLE & ANCHOR LAYOUT