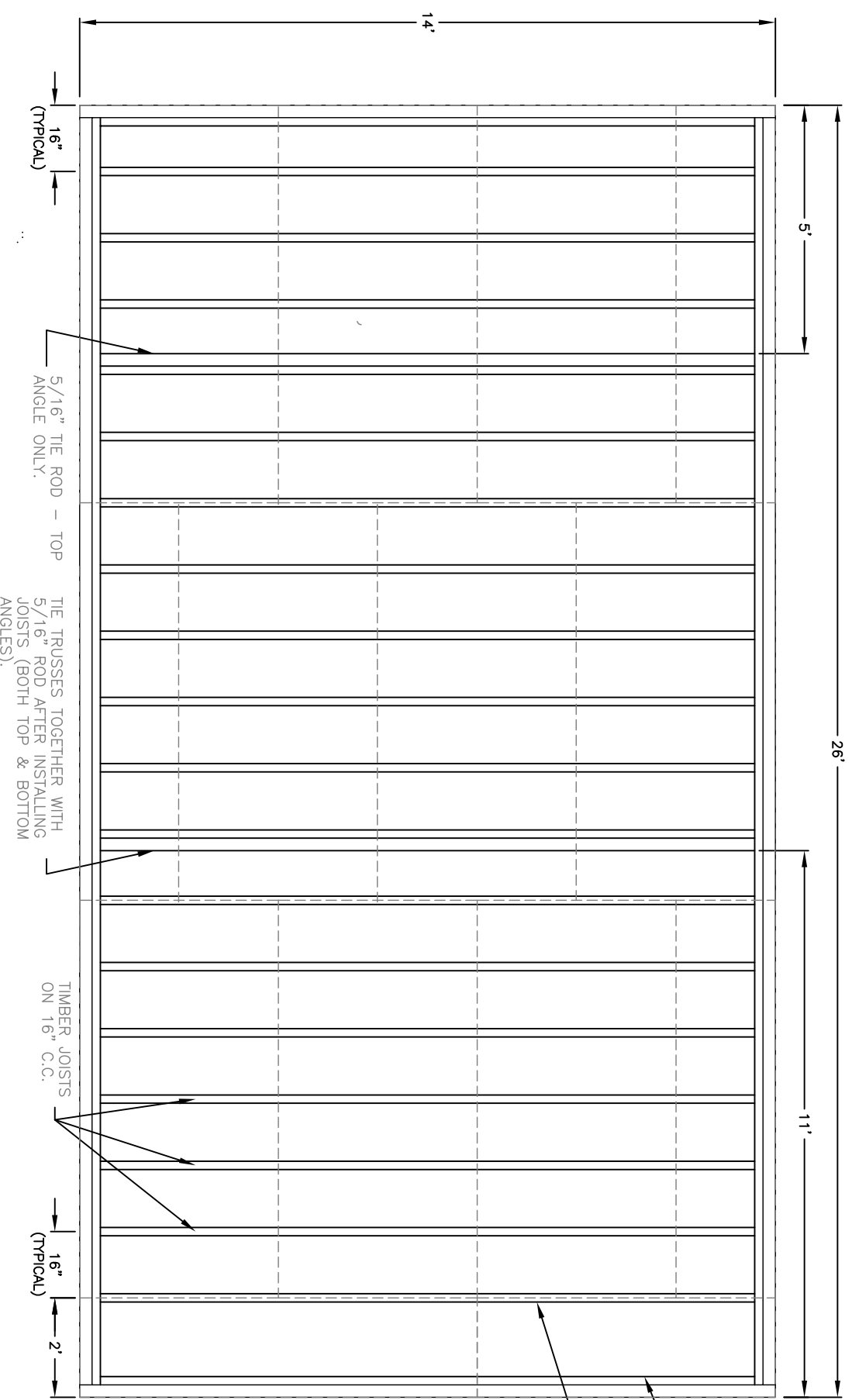


DECK TRUSS PROFILE (2 REQ'D LEFT & RHT.)



DECK LAYOUT

DASHED LINES SHOW TYPICAL LAYOUT FOR PLYWOOD DECK

- 2"x10" FIR SECURED TO INSIDE FACE OF TRUSSES WITH BOLTS USE A SHIM BETWEEN JOIST & BOTTOM ANGLE OF TRUSS TO ENSURE JOIST IS FLUSH WITH TOP OF TRUSS.
- 2"x10" FIR JOISTS ON 16" C.C. STARTING AT TOP END (LAST SPACE IS APPROX. 21" C.C.) MEASURING FROM EDGE OF ANGLE IRON TRUSS (SEE DIAGRAM)
- 24 - 2"x10"x14'-0" FIR REQ'D (CUT TO LENGTH REQ'D).
- 36 - HEAVY-DUTY JOIST HANGERS

- DECK COVER
- 3/4" SELECT FIR PLYWOOD OR MARINE OR EXTERIOR GRADE/ (PRESSURE TREATED BUT IT IS VERY ROUGH).
- G.I.S. IS OK BUT WILL NOT LAST AS LONG



Designed By:

MATRIX
 Marhe Equipment Ltd.
 Ken and Karen Nelson
 Site 2, Box 9, R.R. 1 THE 2X1
 Meke, Saskatchewan S0G 9A8
 Phone: (403) 565-9208

Drawing Title:

**IWSF WATER SKI JUMP
 RAMP DECK DETAILS**

Drawn By:

HUKALO OBERG ENGINEERING LTD.

Date:

FEB 1995

File Name:

IWSFL_R2.DWG