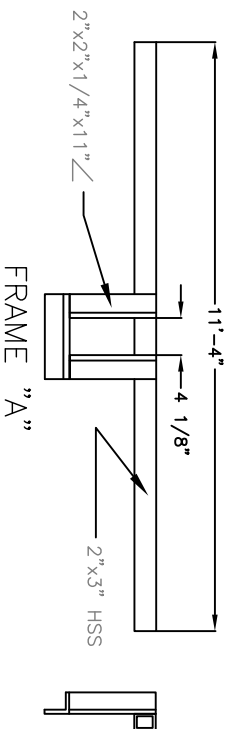
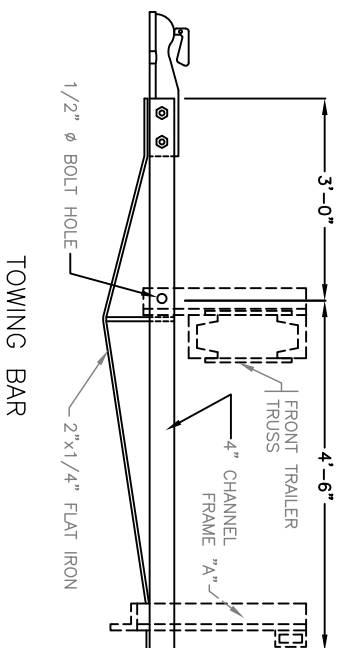


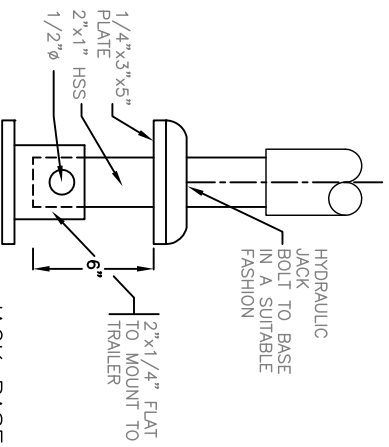
FRONT TRAILER TRUSS



REAR TRAILER TRUSS



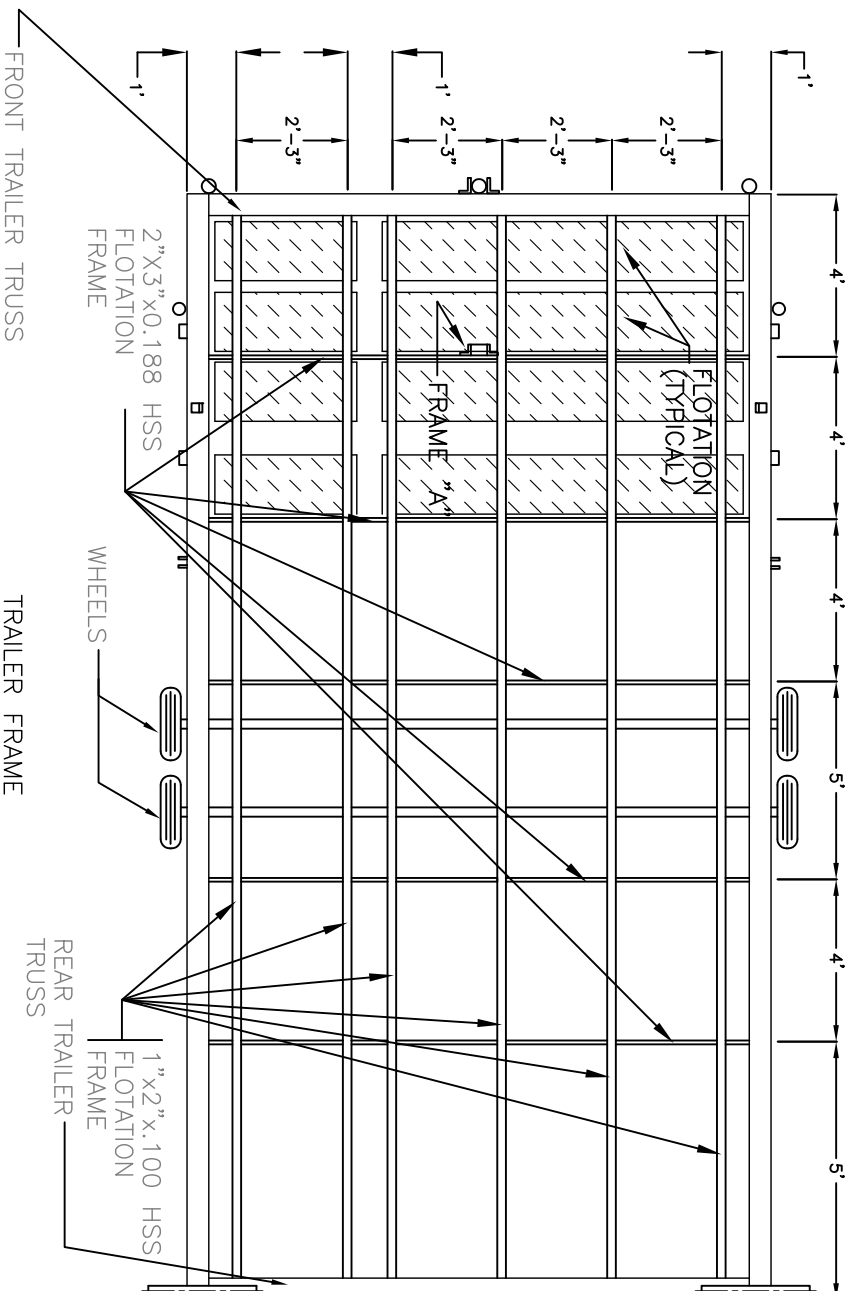
TOWING BAR



JACK BASE

NB: CUT LENGTH OF 2"x1" HSS SUCH THAT WHEN YOUR JACKS ARE FULLY RETRACTED THE JOISTS NEAR THE BOTTOM OF THE JUMP DO NOT QUITE CONTACT THE MAIN FRAME OF THE TRAILER. THIS HEIGHT WILL BE THE MIN. HEIGHT THAT YOUR RAMP CAN BE SET AT.

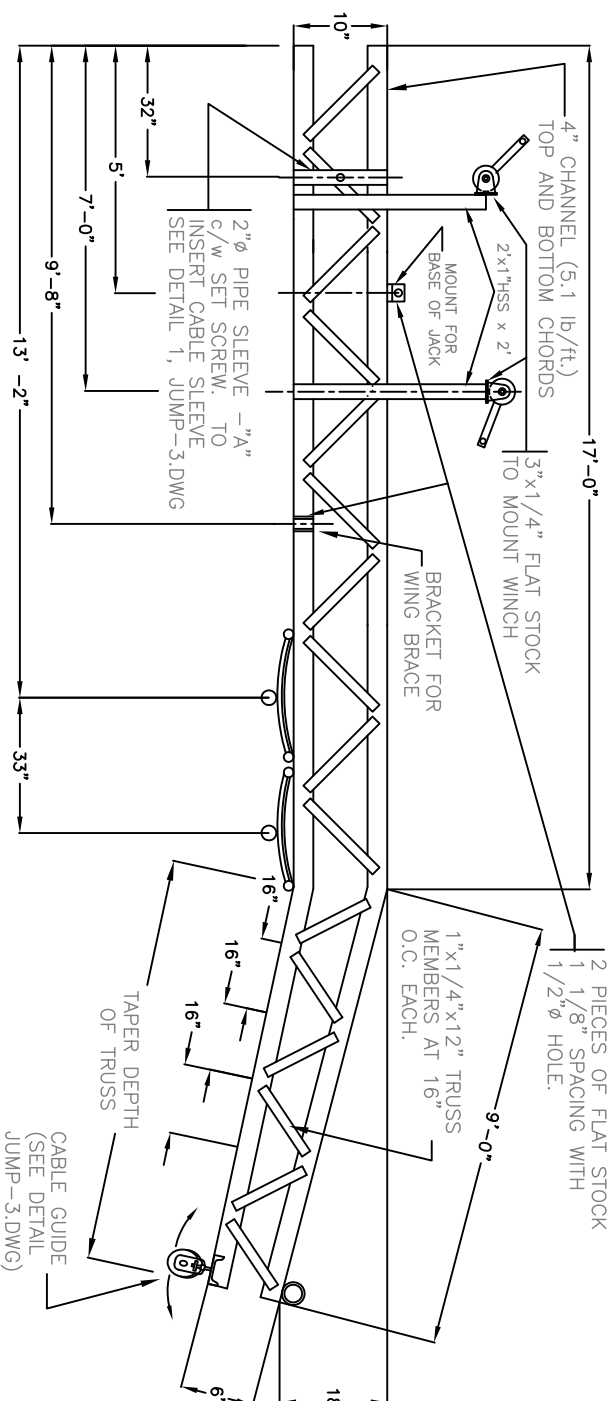
WE USE 1 1/2 TON HYDRAULIC JACKS WITH ABOUT 18" TRAVEL. THIS IS MORE THAN ADEQUATE. THE JACK STEM IS ABOUT 1" Ø AND SHOULD INSERT INTO A SHORT SLEEVE ON THE JACKING BEAM. A 1/4" Ø BOLT IS GOOD SECURITY TO KEEP IT IN PLACE. (REFER TO DETAIL 2 ON JUMP-2.DWG)



FRONT TRAILER TRUSS

TRAILER FRAME

REAR TRAILER TRUSS



NB: IF THE DROP IN THE TAIL OF THE JUMP EXCEEDS 18" YOU WILL NOT BE ABLE TO LOWER THE JUMP BELOW 4 1/2 FT. TO ACCOMMODATE A LOWER RAMP HEIGHT IT WILL BE NECESSARY TO USE 2" X 8" FIR JOISTS FOR THE LOWER 9 JOISTS. WHILE THIS WILL SOFTEN THE IMPACT AREA AT WATERLINE IT SHOULD NOT REDUCE THE POTENTIAL FOR LONG JUMPS. (SPACING @ 12" O.C. WILL CORRECT THIS PROBLEM)

IF THE DROP IN THE TAIL OF THE JUMP EXCEEDS 18" YOU WILL NOT BE ABLE TO LOWER THE JUMP BELOW 4 1/2 FT. TO ACCOMMODATE A LOWER RAMP HEIGHT IT WILL BE NECESSARY TO USE 2" X 8" FIR JOISTS FOR THE LOWER 9 JOISTS. WHILE THIS WILL SOFTEN THE IMPACT AREA AT WATERLINE IT SHOULD NOT REDUCE THE POTENTIAL FOR LONG JUMPS. (SPACING @ 12" O.C. WILL CORRECT THIS PROBLEM)

MAIN TRAILER TRUSS

(2 - REQ'D)

WELD 2'x 3' HSS FLUSH WITH TOP OF MAIN TRAILER TRUSSES PLACE 1x2 ON TOP OF 2'x 3' & WELD IN PLACE. NOTE THAT THE SPACING HAS BEEN DESIGNED FOR FLOTATION BILLETS WHICH ARE 8' LONG.



Drawing Title:  
**WSF WATER SKI JUMP  
TRAILER FRAMING DETAILS**

Designed By:



Marine Equipment Ltd.  
**Ken and Karen Nelson**  
Site 2, Box 9, R.R. 1, 19E 2X1  
Sudon, Ontario, Canada  
Phone: (403) 955-9425

Drawn By: **HUKALO OBERG ENGINEERING LTD.**

Date: **APRIL 1993**

File Name: **IWSFJUMP1.DWG**