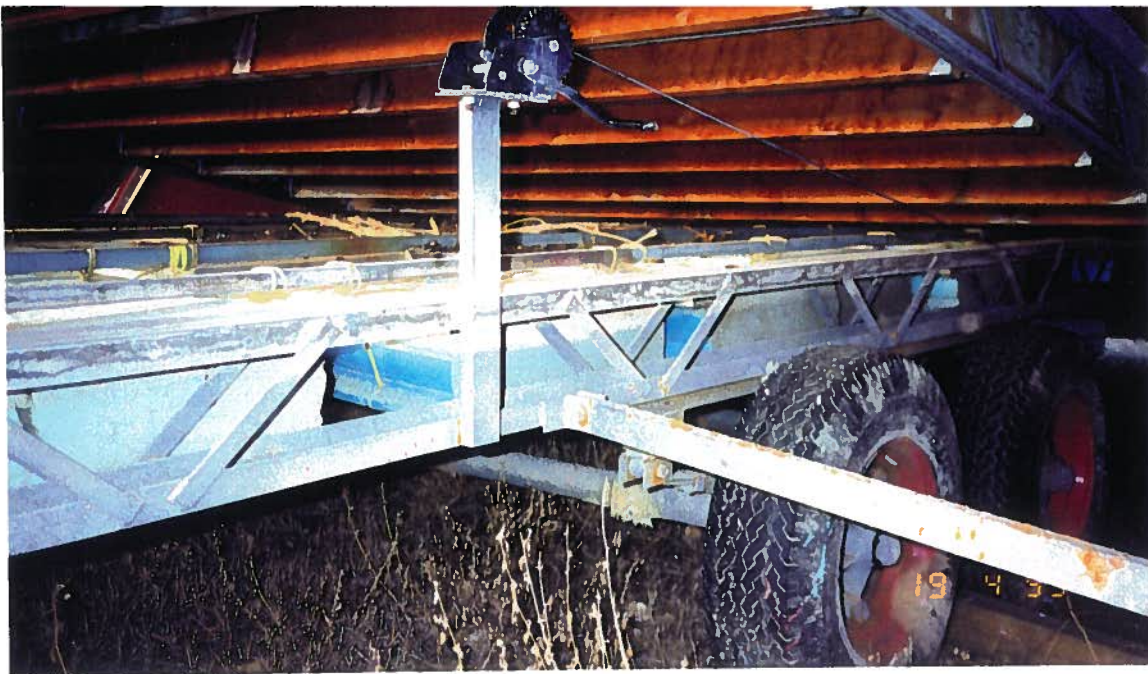




FRONT RIGHT WINCH WITH CABLE SLEEVE IN POSITION.



FRONT OF JUMP. NOTE WORKING DECK AREA 4' X 12'. ALSO UNIQUE
DRIVETRAVING BOAT RIMMED SLEEVES



WING BRACE CONNECTION. WINCH AND MOUNT FOR LEFT ANCHOR CABLE.



WIDE ANGLE OF LEFT SIDE OF TRAILER, DECK AND WING. NOTE SAFETY CHAIN. HYDRALIC JACK IS NOT MOUNTED IN ACCORDANCE WITH DESIGN RECOMMENDATIONS. NOTE WING BRACKET WELDED TO DECK FRAME.

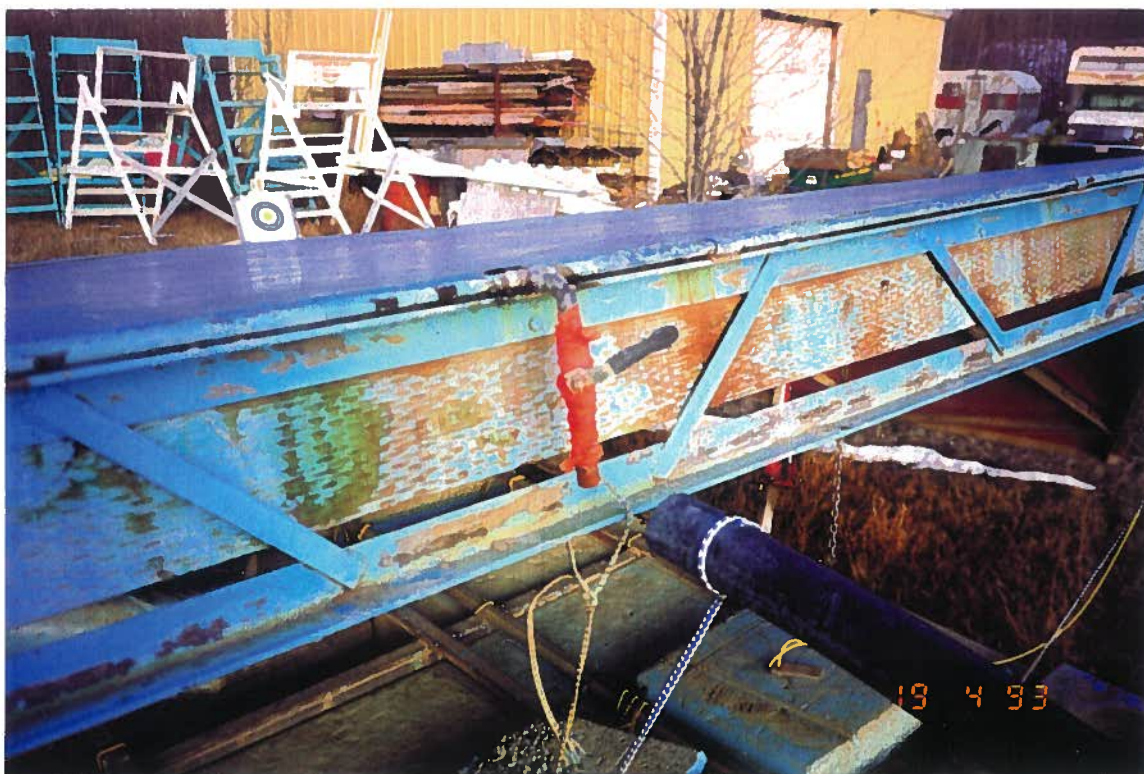


FRONT TRAILER TRUSS WITH TOWING BAR IN POSITION. ALSO BOAT BUMPER AND SLEEVE SHOWN IN POSITION.





WE RAISED OUR JUMP FRAME BY WELDING SHORT PIECES OF 3" x 3" HSS TO THE OPEN FACE OF A LENGTH OF 3" CHANNEL. THIS "AXLE ASSEMBLY" IS BOLTED TO THE TRAILER FRAME TO PERMIT CHANGING THE TONGUE WEIGHT.





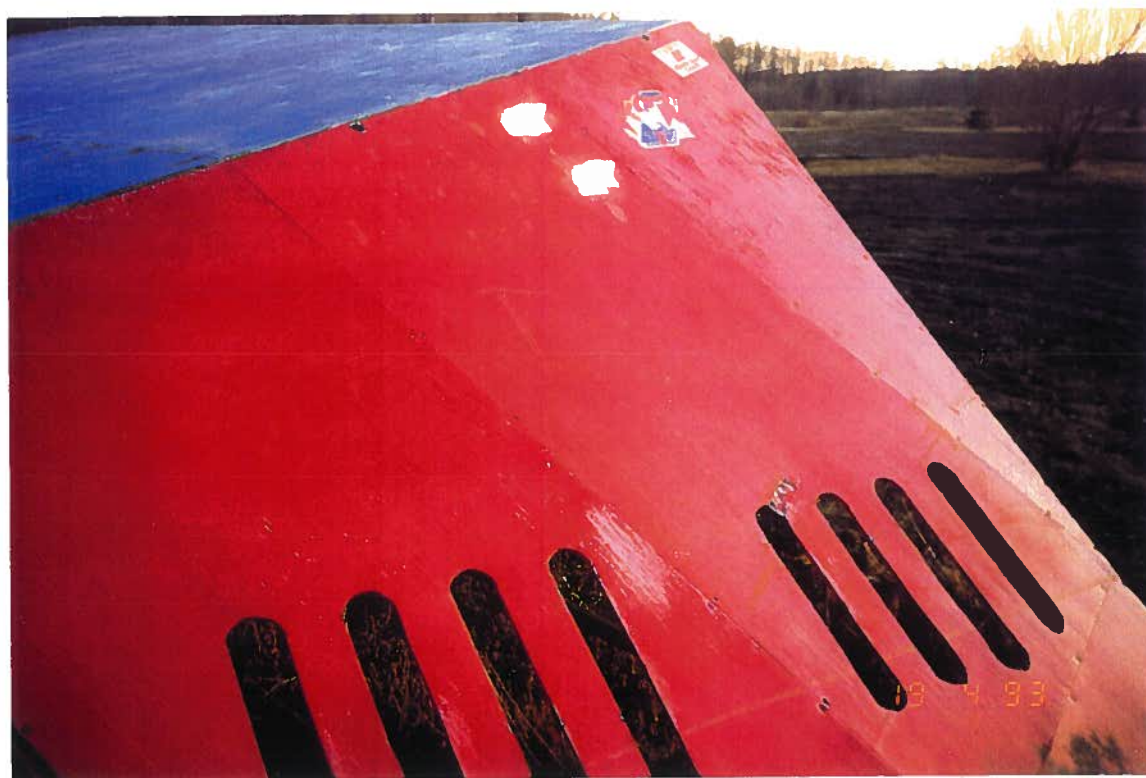
FLOTATION SHOWN TIED INTO PLACE.



TOP OF JACK BOLTED INTO NIPPLE. NOTE THE TIE ROD DRILLED THROUGH THE DECK TRISS.



WING BOLTED TO THE DECK FRAME. NOTE THAT THE BOLT HEAD IS RECESSED.



SLOTS CUT INTO THE RIGHT WING REDUCE BACKWASH INTO OLD SL ALUM COLLISE